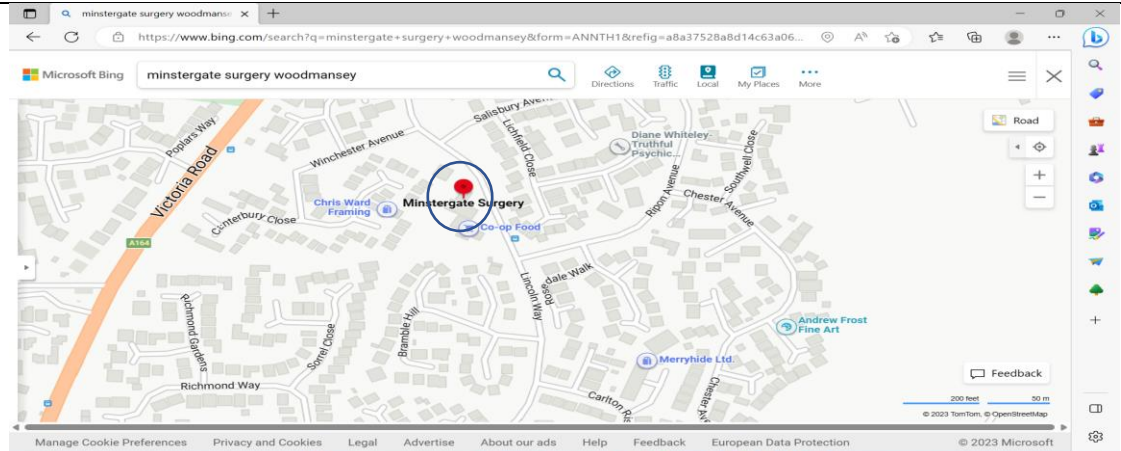


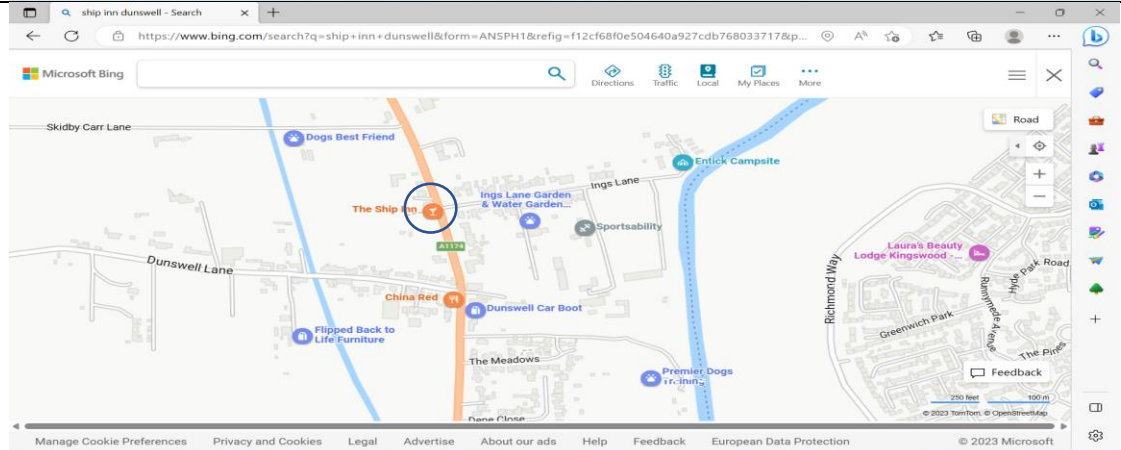
Woodmansey Parish Council
Defibrillators In Woodmansey Parish (Privately Managed and Parish Council Managed)
Updated as of December 2023

Defibs managed by the Parish Council are registered with the Circuit which is the UK database containing all registered units. Local ambulance services strongly recommend that all defibs are registered on the Circuit.

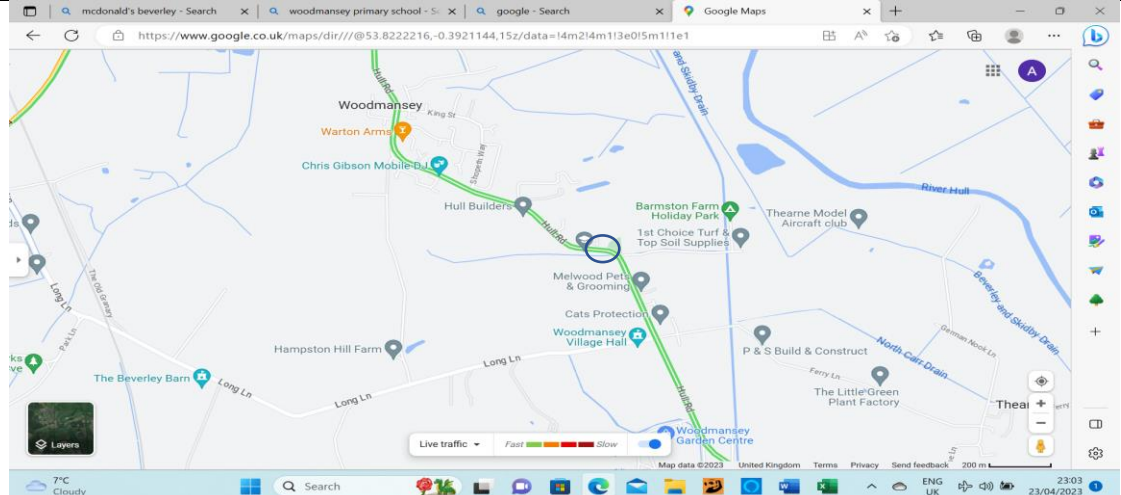
Minstergate Surgery
Lincoln Way
 Managed by
 Woodmansey Parish
 Council
 24/7 Access –
 unrestricted



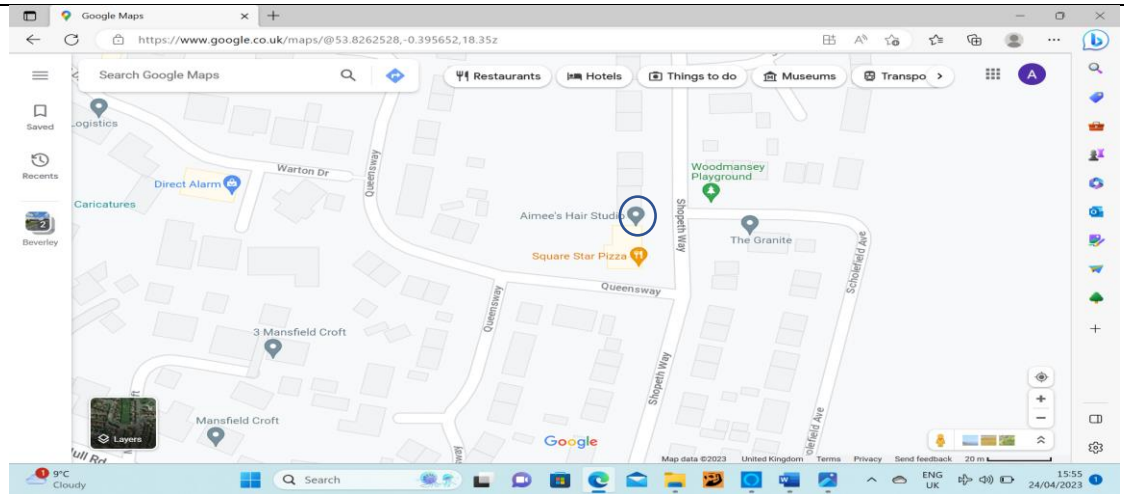
Ship Inn Beverly
Road Dunswell HU6
0AJ
 Managed by
 Woodmansey Parish
 Council
 24/7 Access –
 unrestricted



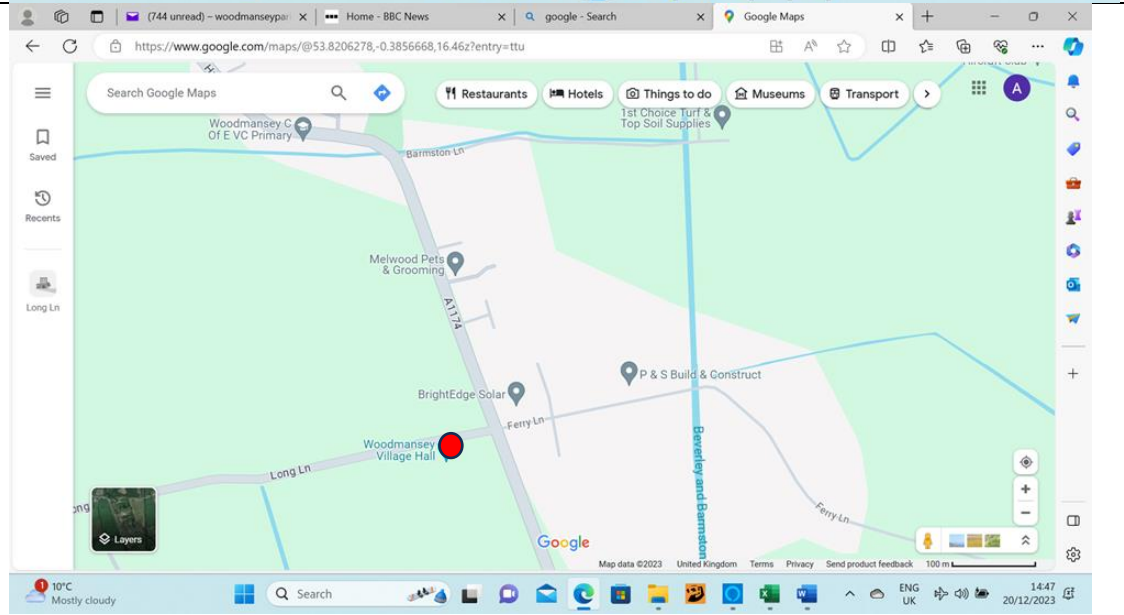
Woodmansey
Primary School, Hull
Road, Woodmansey.
HU17 0TH
 Managed by
 Woodmansey Parish
 Council
 24/7 Access –
 unrestricted



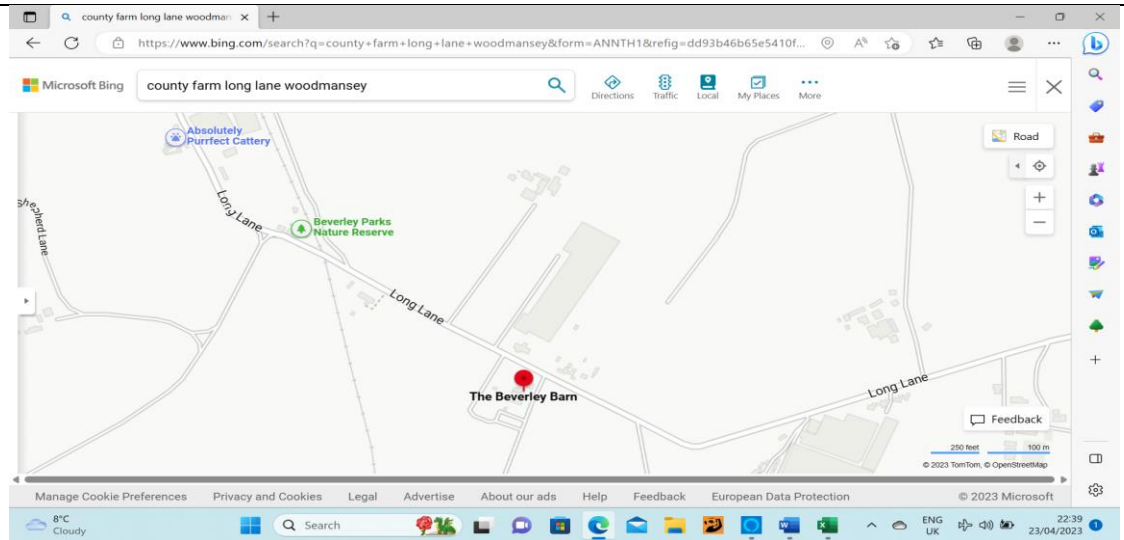
Shopeth Way Shops
Shopeth Way
Woodmansey
Managed by
Woodmansey Parish
Council
24/7 Access –
unrestricted



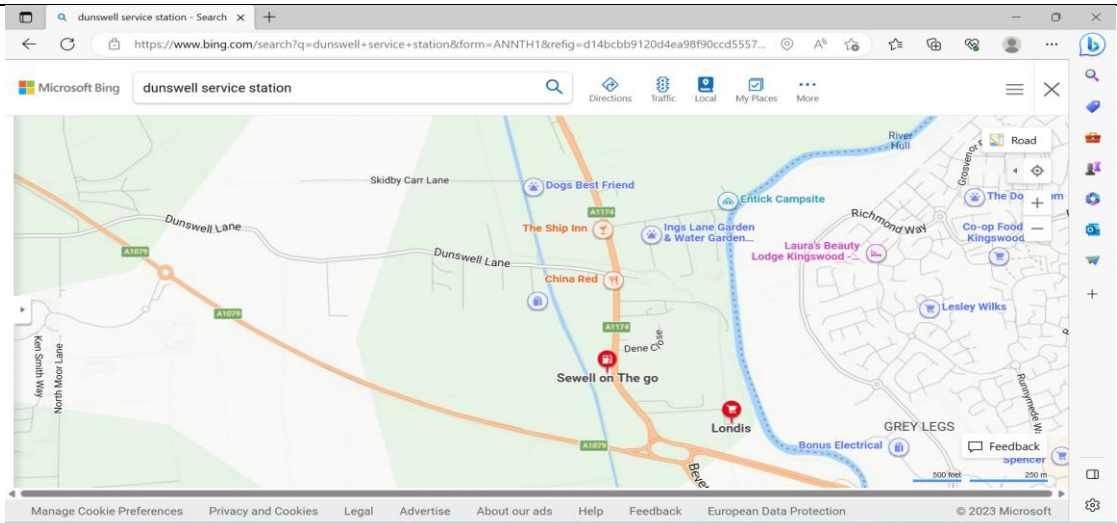
Woodmansey Village Hall, Long Lane,
Woodmansey
Managed by
Woodmansey Parish
Council
24/7 Access –
unrestricted



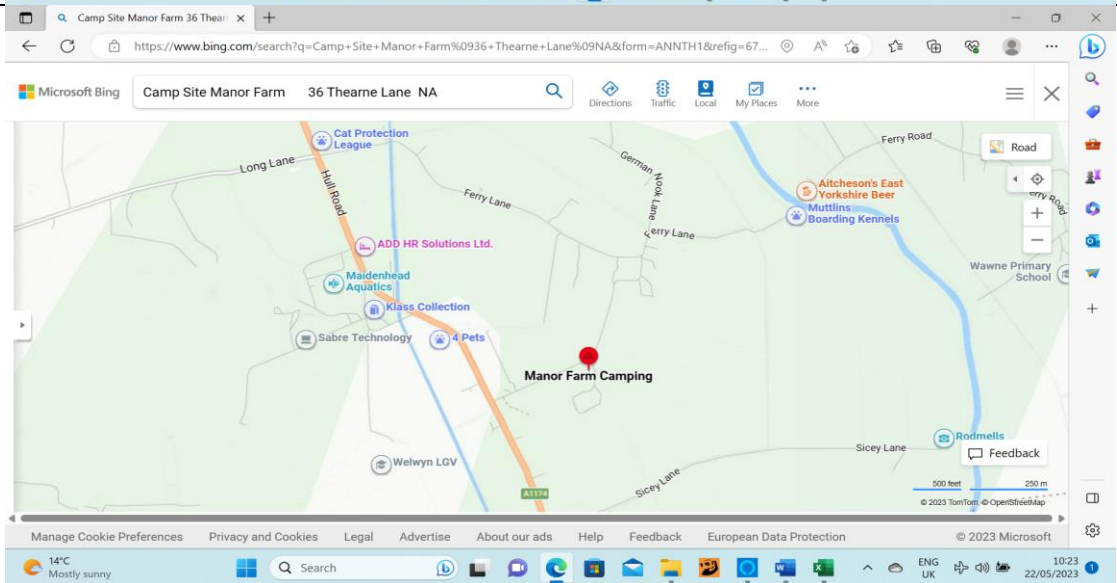
County Farm Long Lane Woodmansey
HU17 ORN
Privately Managed
and restricted access



Dunswell Service Station Beverley
Road Dunswell. HU6 0AA
Privately Managed and restricted access



Manor Farm, 36 Thearne Lane, Woodmansey. HU17 0SA
Privately Managed and restricted access



McDonalds Beverley, Wingfield Way, HU17 8XE
Privately Managed and restricted access

